
Quick Assembly Connector

(Assembly Manual for Flat Cable)

ES-TECH/INTERNATIONAL,INC.

601, Daeyoung Golden Valley, 290-2, Gocheon-dong,
Uiwang-si, Gyeonggi-do, Korea

Tel : +82-31-450-6868, Fax : +82-31-450-6869

Introduction

This product is for connection fiber cable in the field easily and quickly with simple jig without special connection tool, while existing fusion type is required fiber jumper cord for connection in the termination point of fiber cable.

Revision History

ISSUE	DATE	REASON FOR CHANGE
1	07/2009	Original

List of Changes

PAGE	IDENTIFIER	DESCRIPTION OF CHANGE
-	-	Original

Admonishment

Admonishments – in the form of Caution, Note and Reference – must be followed at all times. These warnings are flagged by use of the triangular alert icon (seen below), and are listed in descending order of severity of injury or damage and likelihood of occurrence.



Caution: Caution is used to indicate the presence of a hazard that **will** cause severe personal injury, or substantial property damage if the hazard is not avoided.



Note: Note is used to indicate the presence of a hazard that **can** cause severe personal injury, or substantial property damage if the hazard is not avoided.



Reference: Reference is used to indicate the presence of a hazard that **will** or **can** cause severe personal injury, or substantial property damage if the hazard is not avoided.

1. General

This Assembly manual describes the Quick Assembly Connector (QAC) providing complete instructions for installation and operation. The manual is intended for people who are familiar with fiber optic cable systems and their applications.

2. Description

2.1 Product definition

This product is designed V-groove shape with high quality material to guarantee the safety due to thermal change. And in assembly it is structured for easy insertion of the fiber, and for having the simple assembly tool which help mutual connection between built-in fiber in the ferrule and inserting fiber. As it is called as “Quick Assembly Connector”, it is easy connection shaped passive components.



Installation Image

2.2 Optical Specification

Items	Fiber	UPC	Remarks
Insertion Loss (dB)	SM	$\leq 0.5\text{dB}$	-
Return Loss (-dB)	SM	$\geq 50\text{dB}$	-

3. Assembly Manual

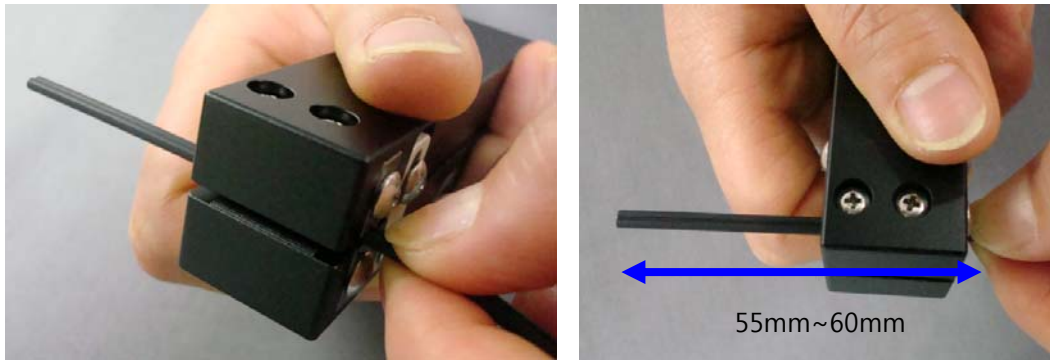
3.1 Insert cap into the flat cable

This procedure is for inserting cap into the flat cable, transparent tape is attached in the point of 200mm behind from the front cable for preventing the cap from slipped far away to the end of cable so that this tapping is for deleting the inconvenience screwing up in the final stage.



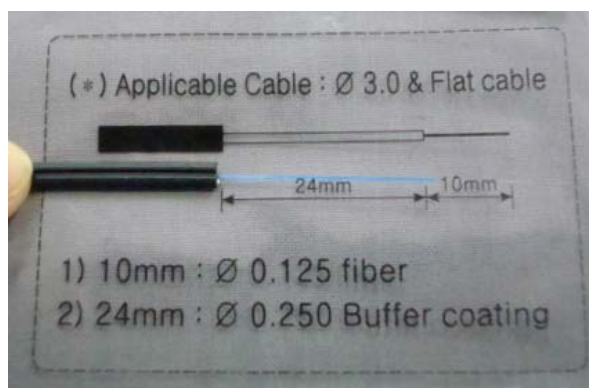
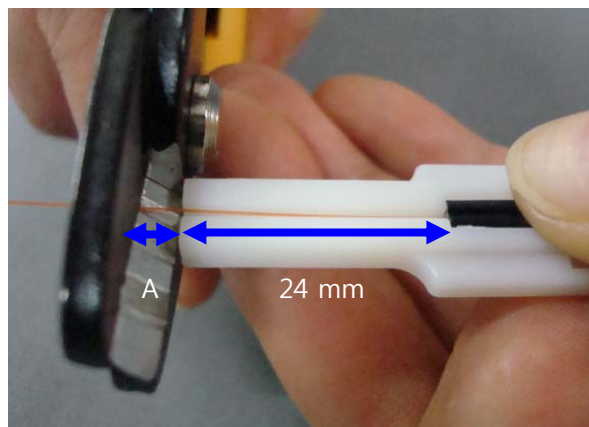
3.2 Flat cable cut

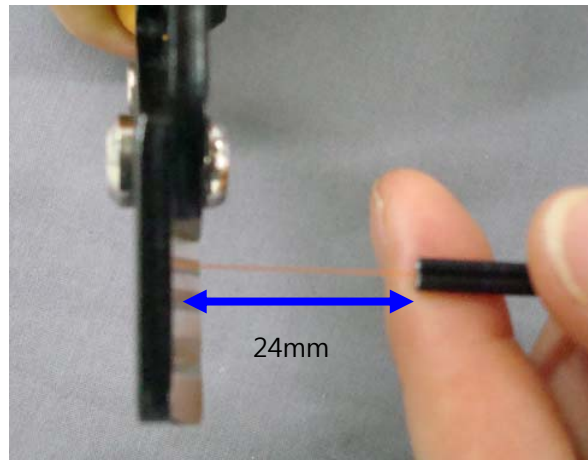
The procedure is: to cut and strip the bare fiber cord as the length as 0.125mm with special tool as the picture which is ready in the length of 55mm~60mm. Hand is required in the fixing in the tool after measuring exact strapping length.



3.3 Fiber strip

This procedure is stripping in 24mm length of bare 0.25 fiber with guide tool. As in the picture, the fiber is stripped in total length including "A" length of stripper itself. Before the strip, measuring up to 24mm in the length which is printed in the vinyl bag is required.



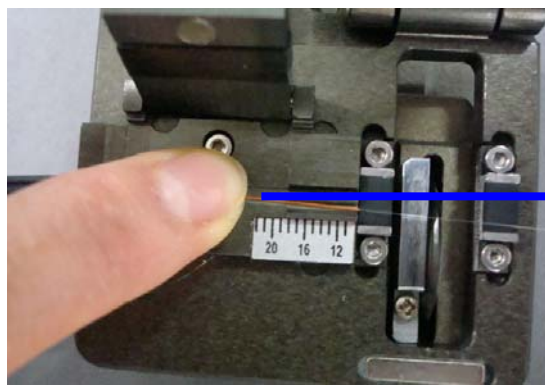


3.4 Fiber Cleaving

This procedure is for stripping 10mm length, 0.125mm bare fiber using the cleaver as in the picture. To cut in exact 90 degree, lay in the V home. Otherwise, duly cutting in 90 degree is not available which might effects wrong performance.



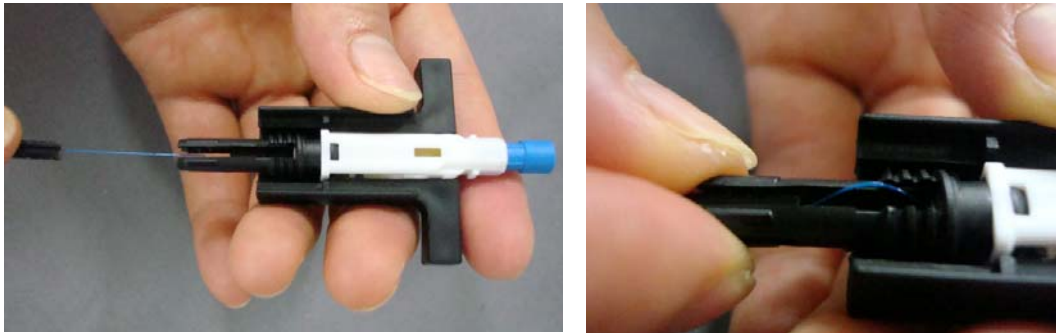
Good



NG

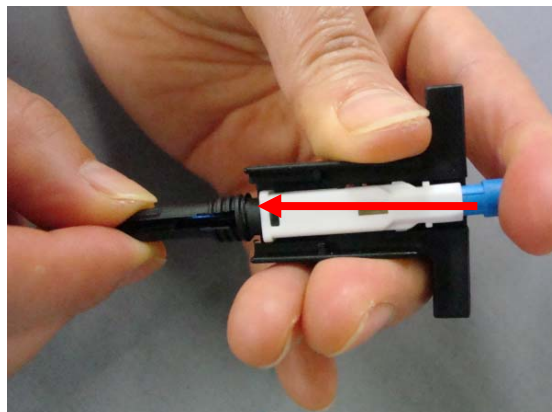
3.5 Insert Fiber into Connector V-groove

This procedure is for inserting the into V-groove in order to laid down to bottom side of assembly tool. In case of full insertion, 0.25mm bare fiber bending is seen.



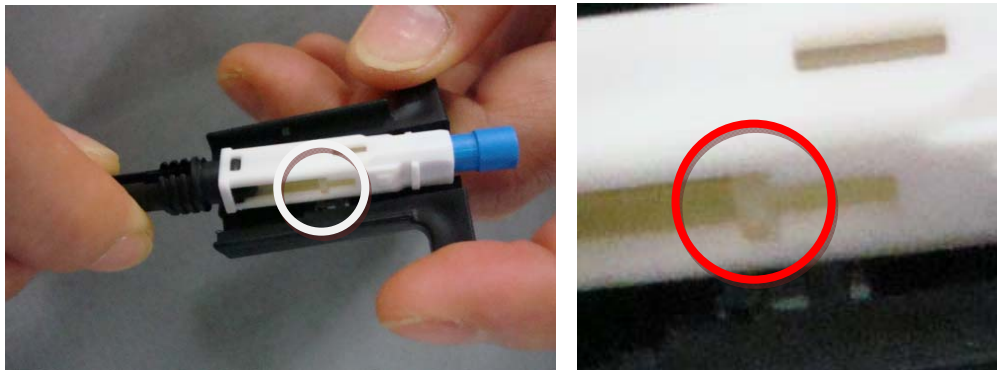
3.6 Pushing the cap

This procedure is for assembling bare fiber and connector. After checking each fiber is connected, push the cap to the lower direction for final fiber assembly each other. Hold the hands till the cap goes to the down, otherwise fiber disconnection might be occurred.



3.7 Remove the Jig

This procedure is for disassembling fiber connector from the assembly tool. Watch out fixing ring is fit into in the picture.



3.8 Clamp the Flat cable

This procedure is for holding the fiber firmly. The pre-fitted cap is to be screwed up to fix stable assemble.



3.9 Insert Housing

This final procedure is to insert the housing into connector body in a serial line



© ES-TECH/INTERNATIONAL,INC. Ltd. All Rights Reserved.

At the time of its preparation, the information in this document is accurate. However, ES-tech/international makes no warranty or representation with respect to its accuracy and disclaims all liability, which may result from inaccuracies, or third-party use, or third-party reliance. This information is subject to change without notice.

No part of this publication may be reproduced, stored in a retrieval system, or transmitted, in any form or by any means, electronic, mechanical, photocopy, or otherwise, without the prior written consent of ES-tech/international. ES-tech/international assumes no responsibility for its use, or for infringements of patents or other rights of third parties. This document implies no license under patents or copyrights. Trademarks in this document belong to their respective companies