
Quick Assembly Connector

(Maintenance Manual for Flat Cable)

ES-TECH/INTERNATIONAL,INC.

601, Daeyoung Golden Valley, 290-2, Gocheon-dong,
Uiwang-si, Gyeonggi-do, Korea

Tel : +82-31-450-6868, Fax : +82-31-450-6869

Introduction

This product is for connection fiber cable in the field easily and quickly with simple jig without special connection tool, while existing fusion type is required fiber jumper cord for connection in the termination point of fiber cable.

Revision History

ISSUE	DATE	REASON FOR CHANGE
1	07/2009	Original

List of Changes

PAGE	IDENTIFIER	DESCRIPTION OF CHANGE
-	-	Original

Admonishment

Admonishments – in the form of Caution, Note and Reference – must be followed at all times. These warnings are flagged by use of the triangular alert icon (seen below), and are listed in descending order of severity of injury or damage and likelihood of occurrence.



Caution: Caution is used to indicate the presence of a hazard that **will** cause severe personal injury, or substantial property damage if the hazard is not avoided.



Note: Note is used to indicate the presence of a hazard that **can** cause severe personal injury, or substantial property damage if the hazard is not avoided.



Reference: Reference is used to indicate the presence of a hazard that **will** or **can** cause severe personal injury, or substantial property damage if the hazard is not avoided.

1. Description

This product is designed V-groove shape with high quality material to guarantee the safety due to thermal change. And in assembly it is structured for easy insertion of the fiber, and for having the simple assembly tool which help mutual connection between built-in fiber in the ferrule and inserting fiber. As it is called as “Quick Assembly Connector”, it is easy connection shaped passive components.

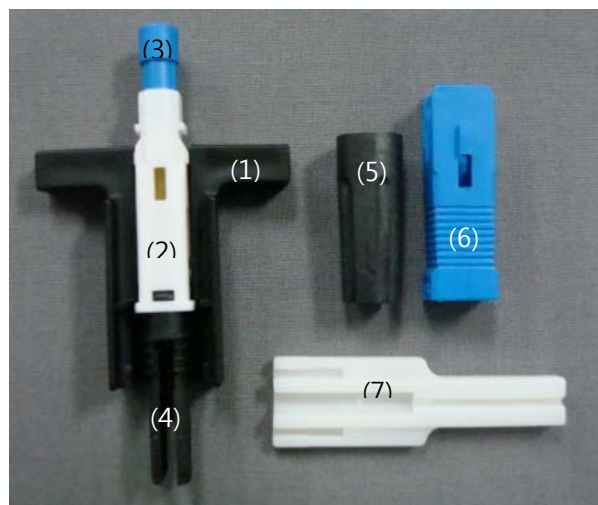


Installation Image

2. Checking point before Assembly

2.1 Checking QAC component in packing

Checking number of the parts in packing

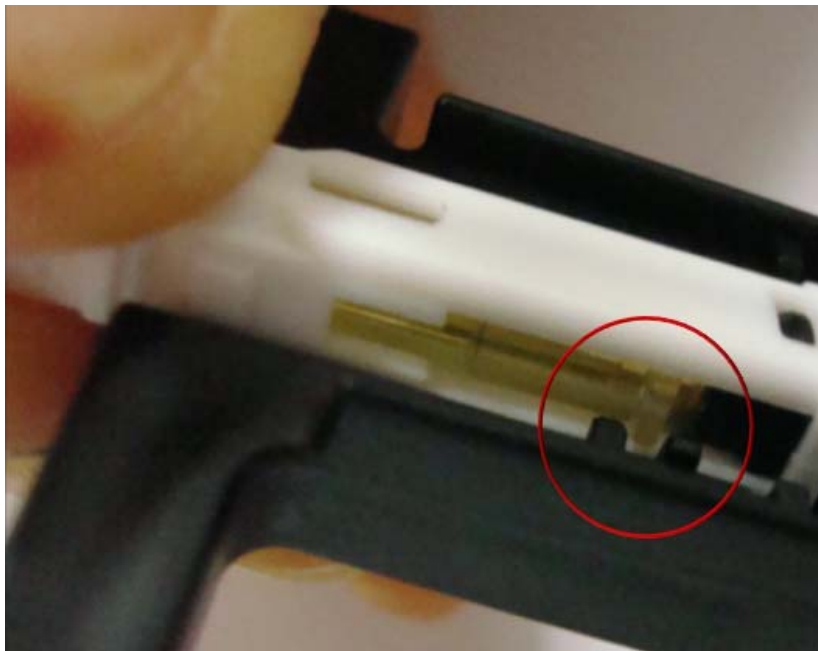


No.	Product name	Q'ty
1	Assembly Tool	1 ea
2	Frame	1 ea
3	Ferrule Cap	1 ea
4	Stopper	1 ea
5	Cap	1 ea
6	Housing	1 ea
7	Guide Tool	-

(*) above matter, Guide tool will be supplied each one among 10pcs of QAC, supply separate of vinyl bag excluding packing list

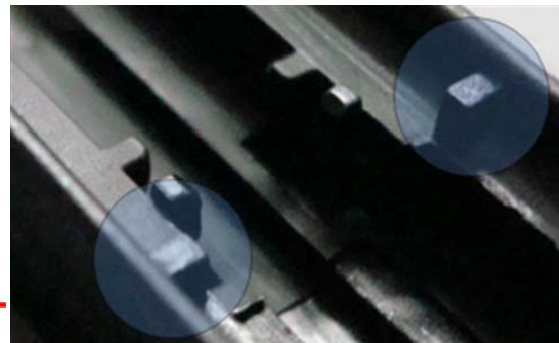
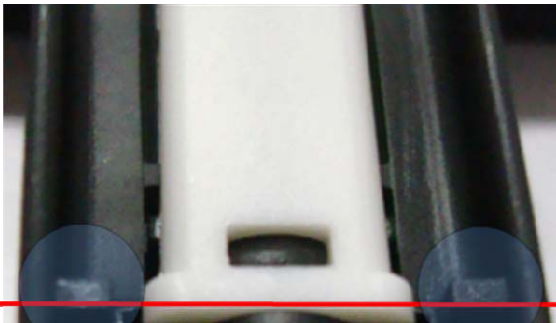
2.2 Confirmation projection point into Clamping ring in Frame

Checking rising point of inside optical the clamping ring in installation frame inside Assembly tool



2.3 Checking the point of Assembly tool frame in line

Checking the stand line of assembly tool at latter part in installation Frame inside Assembly Tool



3. Disassembly after assembly and reassembly procedure

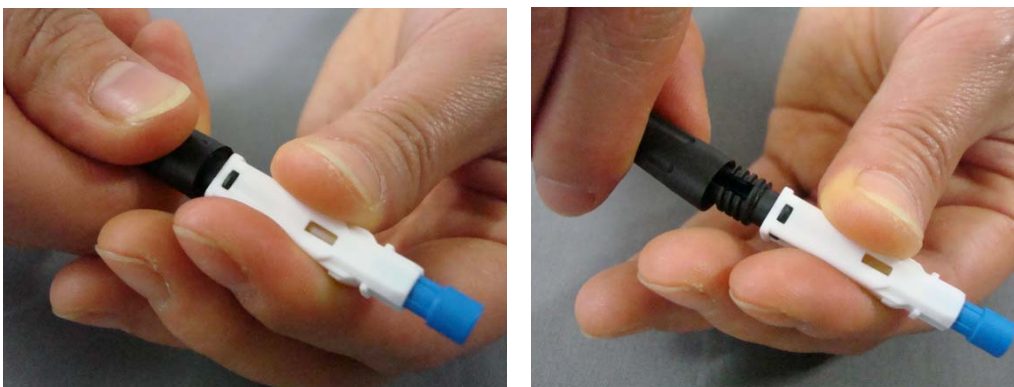
3.1 Separating Housing

Separating final assembly housing in following opposed progress



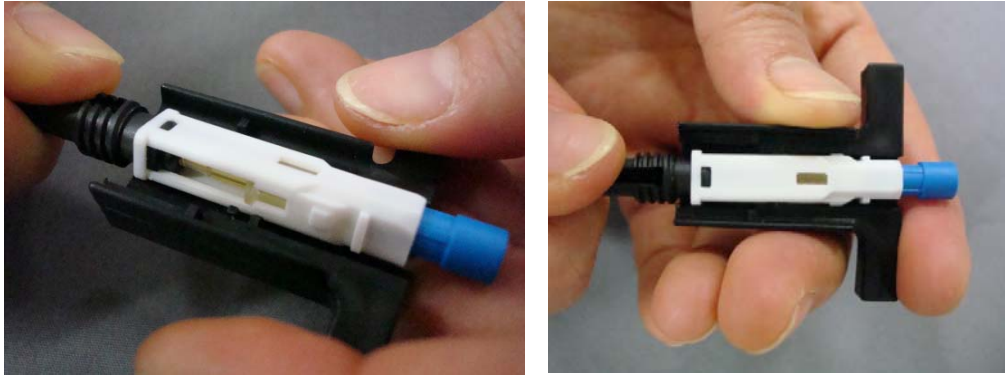
3.2 Separating Cap

After separating housing, un-screw up the cap of latter part



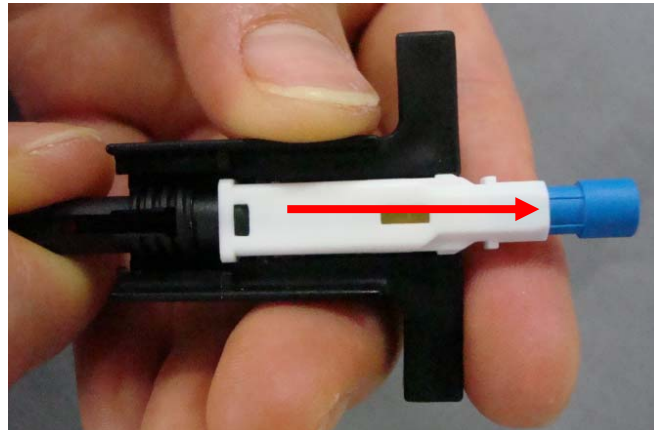
3.3 Insert connector upper into Assembly Tool

After Connector of cap unscrew from assembly tool, clamping ring lay in projected double points of frame assemble for safe fix.



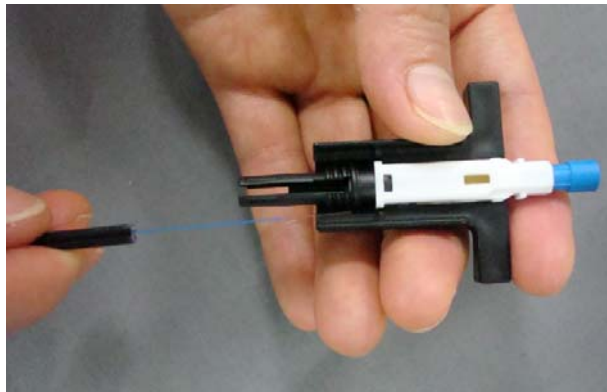
3.4 Separating fiber in the connector

Pushing the safe arrival in the connector in assembly tool as following arrow direction, this is to dis-connecting fiber condition.



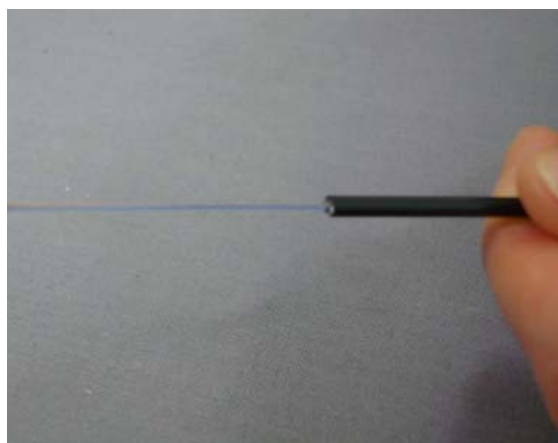
3.5 Separating fiber cord in the connector

In assembly tool, pulling out latter part of fiber cord is separating away from optical fiber connector.



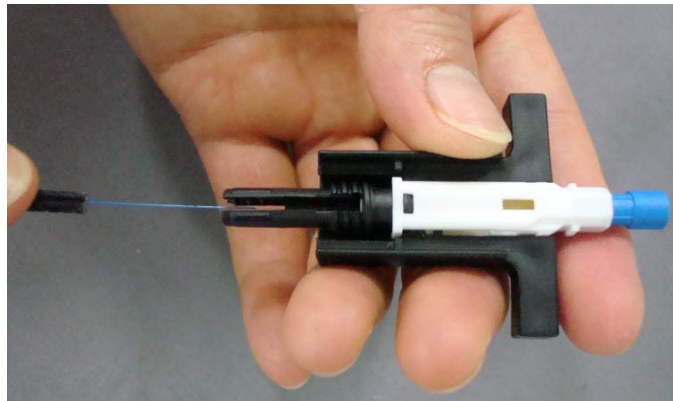
3.6 Checking surface of Optical fiber

Checking break away of the fiber surface from assembly tool, if fiber is broken, strip the cord to cut for preparing, if foreign instances is attached on, clean exposed fiber with alcohol, then keeping in clean condition of fiber for assembly.



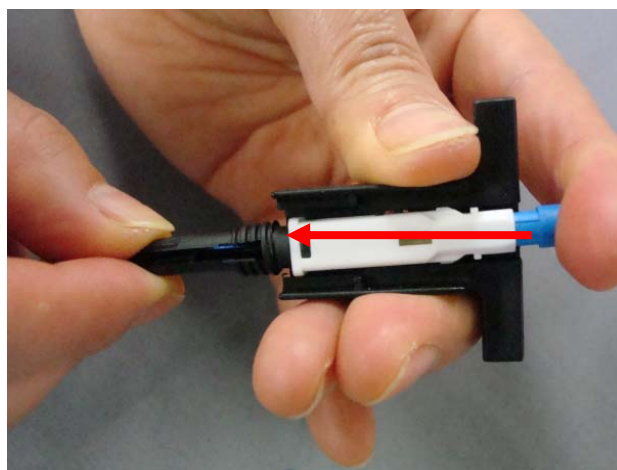
3.7 Insert Fiber into Connector V-groove

Insert clean fiber to inside V-groove through stopper of latter part of safe arrival connector on assembly tool



3.8 Push the cap

Pushing the ferrule cap in following arrow direction for connecting fiber



3.9 Remove the Assembly Tool

Removal assembly optical fiber from assembly tool



3.10 Clamp the Flat cable

Screw up the Optical fiber cord using Cap



3.11 Insert Housing

Insertion housing of assembly into the connector body



© ES-TECH/INTERNATIONAL,INC. All Rights Reserved.

At the time of its preparation, the information in this document is accurate. However, ES-tech/international makes no warranty or representation with respect to its accuracy and disclaims all liability, which may result from inaccuracies, or third-party use, or third-party reliance. This information is subject to change without notice.

No part of this publication may be reproduced, stored in a retrieval system, or transmitted, in any form or by any means, electronic, mechanical, photocopy, or otherwise, without the prior written consent of ES-tech/international. ES-tech/international assumes no responsibility for its use, or for infringements of patents or other rights of third parties. This document implies no license under patents or copyrights. Trademarks in this document belong to their respective companies